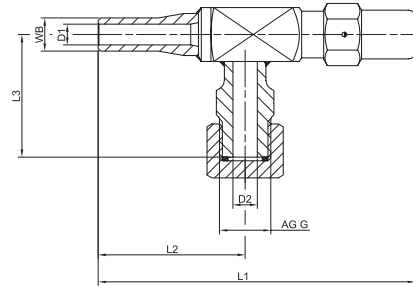
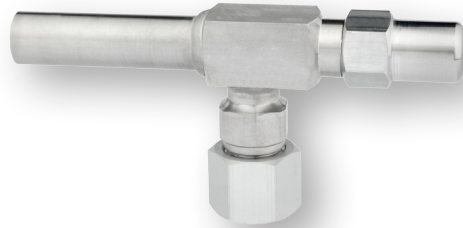


# FÜLLVENTIL MIT STUMPFSCHEISSANSCHLUSS – EDELSTAHL – SERIE 263

## [CHARGING VALVE WITH BUTT WELD CONNECTION – STAINLESS STEEL – SERIES 263]



- ✓ 100% He tested
- ✓ Made in Germany

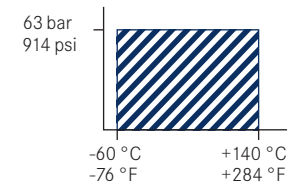


RoHS  
conform



Part Number	WB mm	W mm	DN mm	NPS inch	AG G inch	D <sub>1</sub> mm	D <sub>2</sub> mm	L <sub>1</sub> mm	L <sub>2</sub> mm	L <sub>3</sub> mm	Kv m <sup>3</sup> /h
263 110 000	13,5		08	1/4	1/2	8,5	10	130	60	50	2,1
263 111 000	13,5		08	1/4	1/2	8,5	10	200	130	50	2,1
263 112 000	17,2		10	3/8	1/2	12	10	130	60	50	2,8
263 113 000	17,2		10	3/8	1/2	12	10	200	130	50	2,8
263 010 000		18	10	3/8	1/2	12	10	117	47	50	3,2
263 101 000		18	10	3/8	1/2	12	10	150	80	50	3,2
263 102 000		18	10	3/8	1/2	12	10	190	120	50	3,2
263 114 000	21,3		15	1/2	1/2	16	10	130	60	50	3,0
263 115 000	21,3		15	1/2	1/2	16	10	200	130	50	3,0

Edelstahl  
[stainless steel]



- ✓ Zulassung für NH<sub>3</sub>, CO<sub>2</sub>, Standardkältemittel  
[approval for NH<sub>3</sub>, CO<sub>2</sub>, Standard refrigerants]
- ✓ Manometeranschluss auf Anfrage  
[Manometer port upon request]